

## SOW TRACKER

This entry level software is designed to assist the swine producer in managing the breeding, farrowing and weaning aspects of their swine production program. It is written in MS-Access® and compatible with USB printers. It has the capability of converting data from some popular reproductive data management software applications. There are more than fourteen reproductive data management reports that can be used by the producer to assist them in management of their swine farrowing operation. Pricing is a one time fee. Data can be extracted for upgrading to more comprehensive software applications.



Iowa Pork Industry Center  
109 Kildee Hall  
Iowa State University  
Ames, IA 50011  
Address Correction Required

## SOW TRACKER Swine Reproductive Data Management Software

Iowa Pork Industry Center  
Iowa State University

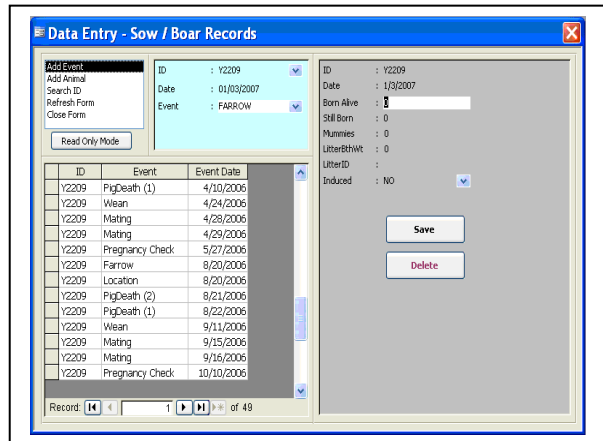


Phone: 800-808-7675  
515-294-4103  
Website: [www.ipic.iastate.edu](http://www.ipic.iastate.edu)



# Easy Data Entry

Data entry is done through an easy drop down menu based system. Adding new sows is very easy and adding or editing reproductive events is done in full view of the sows' full reproductive history. All basic events, such as entry, mating, pregnancy check, group ID, location ID, farrow, foster, pig death, wean, part wean, nurse on, nurse off and sow removal are included. Also, a dictionary with user defined categories for genetics, abortion reasons, death reasons, treatments, mating types and origins is included.



# Sow Tracker Reports

Sow Tracker offers a variety of reproductive data management reports to assist the swine producer in more efficiently managing the reproduction of the herd.

## Sow Management Lists

Assist in finding non-productive sows and normal management activities.

## Boar Comparison Report

Compare the reproductive performance of boars used in the herd.

## Boar Use Report

Shows the times each boar was used over user selected time frames.

## Database Extraction

Allows for the extraction of 100+ user selected variables into text or Excel files for further analysis by the producer.

## Farrowing / Pregnancy Report

Lists the matings made over a user selected number of weeks and the number of sows that are still pregnant for each week. This report also documents the reason for not being pregnant by week and parity, and documents non-productive sow days.

## Genetic Matings Report

Shows the matings made in the herd by sow or boar genetics.

## ID or Group Listings

Lists sows and boars by active or removed status with details.

## Multiple Mating / Repeat Services Report

Compare performance by number of matings or services.

## Parity Comparison

Comparison of performance by parity.

## Reproductive Summary

Summary of major reproductive traits over user selected time.

## Genetics / Origin Comparison Report

Compare performance by genetics or origin of sow.

## Sow Cards

Prints off sow cards for use in farrowing barn and breeding.

# Sign-up Form (one time fee)

*Sign up for:* *Price* *Total*

- |   |             |
|---|-------------|
| <input type="checkbox"/> Sow Tracker                    | \$ 500.00   |
| <input type="checkbox"/> Sow Tracker for multiple herds | \$ variable |

\_\_\_\_\_  
Name

\_\_\_\_\_  
Address

\_\_\_\_\_  
Phone

\_\_\_\_\_  
E-mail

## Method of Payment

- |                                  |                                     |
|----------------------------------|-------------------------------------|
| <input type="checkbox"/> Check   | <input type="checkbox"/> MasterCard |
| <input type="checkbox"/> Bill Me | <input type="checkbox"/> Visa       |

\_\_\_\_\_  
Credit Card No. \_\_\_\_\_  
Expire Date

\_\_\_\_\_  
Signature

## Iowa Pork Industry Center

109 Kildee Hall  
Iowa State University  
Ames, IA 50011

Phone: 800-808-7675  
Fax: 515-294-5698  
www.ipic.iastate.edu